

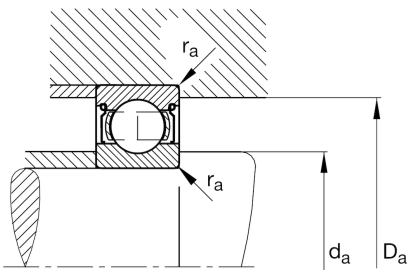
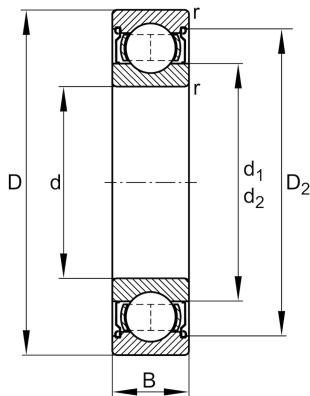
FAG

**6212-2Z**

Deep groove ball bearing

Schaeffler ID:  
0167209540000Deep groove ball bearing 62...-2Z, single  
row, shields, steel sheet metal cage

## Technical information

**Main Dimensions & Performance Data**

d	60 mm	Bore diameter
D	110 mm	Outside diameter
B	22 mm	Width
$C_r$	57.000 N	Basic dynamic load rating, radial
$C_{0r}$	36.500 N	Basic static load rating, radial
$C_{ur}$	2.550 N	Fatigue load limit, radial
$n_G$	7.900 1/min	Limiting speed
$n_{gr}$	6.800 1/min	Reference speed
	0,775 kg	Weight

**Dimensions**

$r_{min}$	1,5 mm	Minimum chamfer dimension
$D_2$	97,7 mm	Caliber diameter outer ring
$d_1$	75,8 mm	Shoulder diameter inner ring

**Mounting dimensions**

$d_{amin}$	69 mm	Minimum diameter shaft shoulder
$D_{amax}$	101 mm	Maximum diameter of housing shoulder
$r_{amax}$	1,5 mm	Maximum fillet radius

**Calculation factors**

$f_0$	14,5	Calculation factor
-------	------	--------------------

**Temperature range**

$T_{min}$	-20 °C	Operating temperature min.
$T_{max}$	120 °C	Operating temperature max.